

China, highway police agency, wireless CCTV for speed & safety control

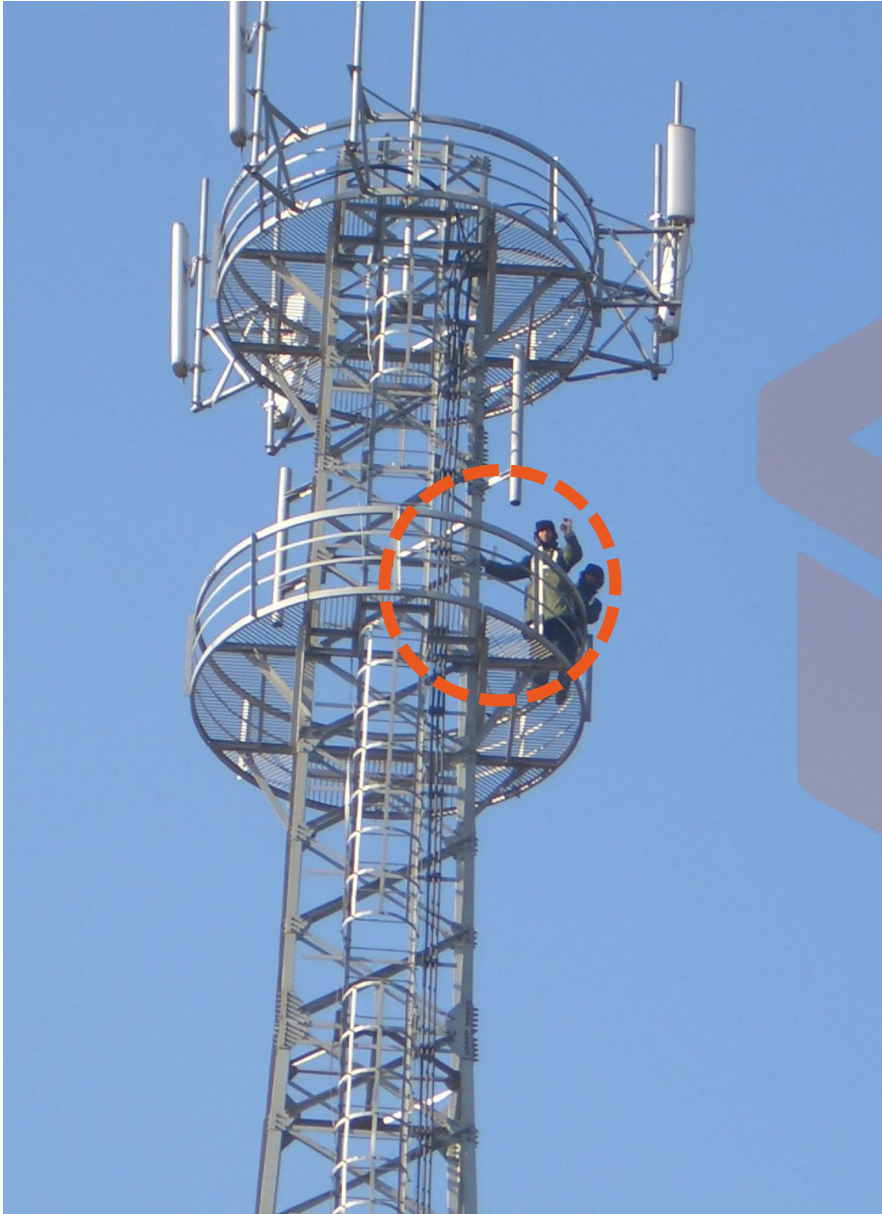


Features:

- . Wireless transmission integrated with speed camera
- . Lowest temp. at -40° C
- . Robust enclosure



China, highway police agency, wireless CCTV for speed & safety control



Client feedback:

With the wireless CCTV system, we can catch drivers who are speeding or not fasten the seat belt.

All devices work even when the temperature dropped to -40°C

